

Invictus  
Leadership  
Academy 2026  
Mid-Year LCAP  
Implementation  
Update

February 25,  
2026





# Purpose of Mid-Year LCAP Review

Provide a mid-year progress update on implementation of the Board-adopted 2025–26 LCAP

Monitor progress toward goals, actions, metrics, and expenditures

Support continuous improvement and fiscal oversight

This is a monitoring report only; no revisions to the adopted LCAP

# School Context & Student Profile

Independent TK–8 charter authorized by LAUSD

Serving 186 students (TK–8)

100% unduplicated pupils (Low-Income, English Learners, Foster Youth)

Instructional focus on personalized learning, leadership, and C-STEAM

Goal	Action	Total Funds Budgeted	Midyear Expenditure
1	1	\$ 182,597.00	\$ 163,724.00
1	2	\$ 2,390,160.00	\$ 2,299,626.00
1	3	\$ 54,230.00	\$ 65,890.00
1	4	\$ 32,750.00	\$ 31,750.00
2	1	\$ 514,472.00	\$ 487,128.00
2	2	\$ 53,000.00	\$ 50,600.00
2	3	\$ 31,500.00	\$ 31,500.00

## 2025–26 LCAP Goals

Goal 1: Increase academic growth and grade-level proficiency in ELA and Math

Goal 2: Promote a positive school culture, climate, and learning environment

Goal 1: Key  
Actions –  
Implementation  
Status

---

High-quality instructional program  
and enrichment: **On track**

---

Highly qualified staffing and added  
specialist roles: **On track**

---

Professional development aligned  
to literacy, math, EL, and behavior:  
**Ongoing**

---

Assessment systems (i-Ready,  
DIBELS, ELPAC): **Implemented as  
planned**

# Goal 1: Academic Outcomes (Mid-Year)



Majority of students demonstrating growth on interim assessments (i-Ready)



Over 60% of students increased at least one performance band in ELA and Math



Growth strongest in upper grades; continued focus needed in K–2 Math and EL progress



Attendance is a key factor impacting academic growth

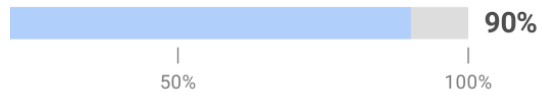
# i-Ready Reading – Mid-Year

(Preliminary still testing)

Diagnosis MOST RECENT

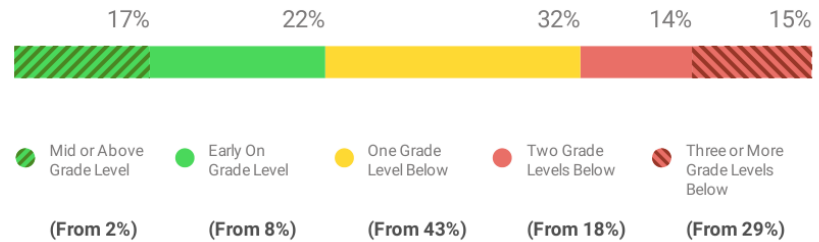
Assessed/Total: 175/186

## Progress to Annual Typical Growth (Median)

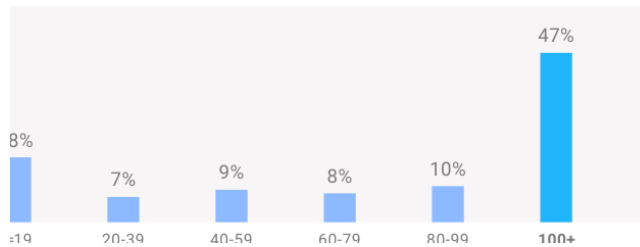


90% percent progress towards Typical Growth for this school is 90%. This is the average annual growth for a student at their grade and assessment level.

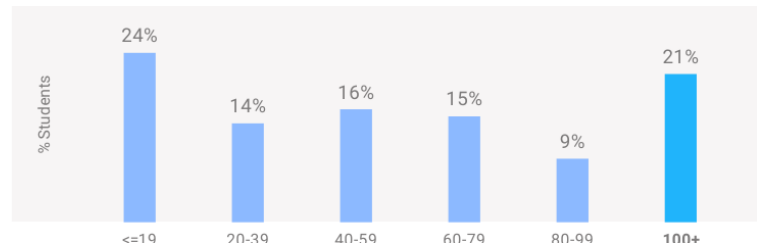
## Current Placement Distribution



## Distribution of Progress to Annual Typical Growth



## Distribution of Progress to Annual Stretch Growth®



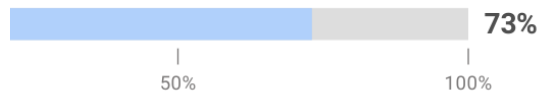
# i-Ready Math – Mid-Year

(Preliminary still testing)

Diagnosis Most Recent

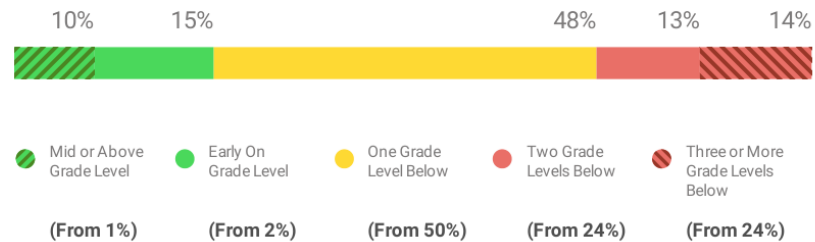
Assessed/Total: 174/186

## Progress to Annual Typical Growth (Median)

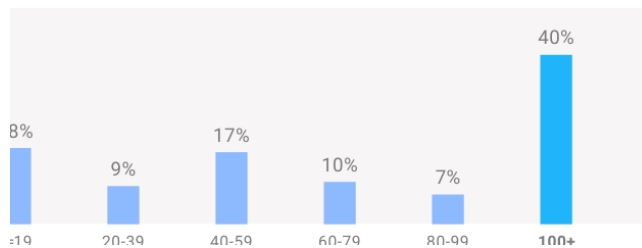


Percent progress towards Typical Growth for this school is 73%. This is the average annual growth for a student at their grade and assessment level.

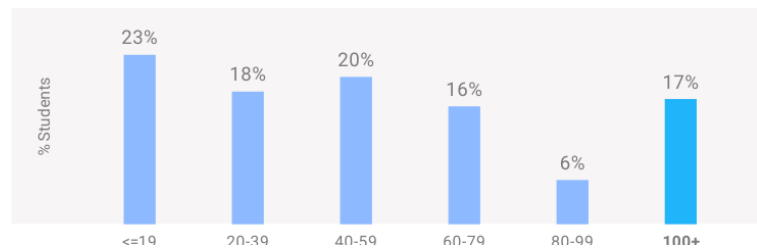
## Current Placement Distribution



## Distribution of Progress to Annual Typical Growth



## Distribution of Progress to Annual Stretch Growth®



Goal 2: Key  
Actions –  
Implementation  
Status

---

Effective and safe school facilities  
that facilitate learning:  
**Implemented as planned**

---

Supportive school climate that  
celebrates inclusion and student  
connectedness: **Ongoing**

---

Meaningful engagement of parents  
and community members: **Ongoing**

---

## Goal 2: Climate and Culture Progress (Mid-Year)



Positive behavior supports (PBIS) implemented with reduced suspensions



Student connectedness survey results improved year-over-year



Attendance is improving, with continued focus on chronic absenteeism



Facilities are maintained in good repair

Goal 2:  
Parent & ILA  
Community  
Member  
Engagement  
Ongoing

Parent, student, and staff surveys are currently in progress

Strong participation in meetings and school events

School staff are providing feedback to inform PD, enrichment, and engagement strategies



# LCAP Budget & Expenditure Monitoring

LCAP actions are aligned to our adopted budget and Interim Financial Reports

No material differences between budgeted and actual expenditures to date

Supplemental & Concentration funds are being used to support our unduplicated pupils

Timing adjustments noted; no mid-year reallocation of funds

# Increased or Improved Services for Unduplicated Pupils



Services include Reading Specialists, Writing Support, ELD support, new Academic Achievement Coordinator/VP, increased Counseling/Social-Emotional Support



Expanded small-group instruction and targeted interventions, implemented additional supplemental curriculum for ELL's



Actions remain aligned with proportionality requirements

# Challenges & Mid-Year Adjustments



Attendance variability is impacting academic growth for some students

Increased Socio-Emotional Learning focus for students demonstrating behaviors that inhibit learning

# Next Steps (Second Half of the Year)



Continue implementation of all LCAP actions

Monitor interim academic, attendance, and climate data

- continue use of FIABs

- continue scorecard utilization and monitoring of KPIs

Continued focus on EL redesignation and chronic absenteeism

Use year-end data to inform the 2026–27 LCAP update



# Board Acknowledgement

This Mid-Year LCAP Update is presented for information and oversight

No action required

Documentation retained for compliance, audit, and authorizer review